

TS 4000
TS 4000 S

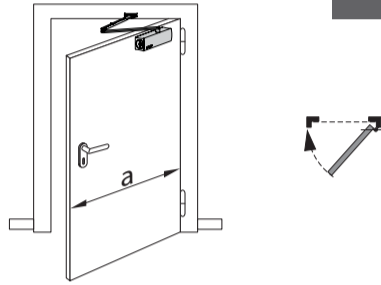
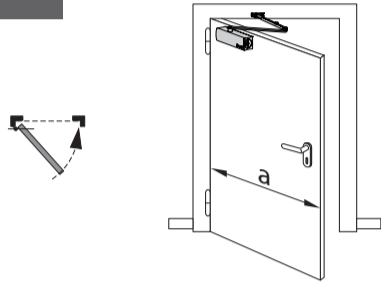


107754-02



A

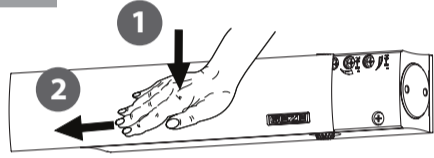
B



TS 4000/4000 S $a \leq 1400$ mm
TS 4000 EN 5-7 $a \leq 1600$ mm

TS 4000/4000 S $a \leq 1400$ mm
TS 4000 EN 5-7 $a \leq 1600$ mm

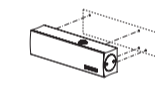
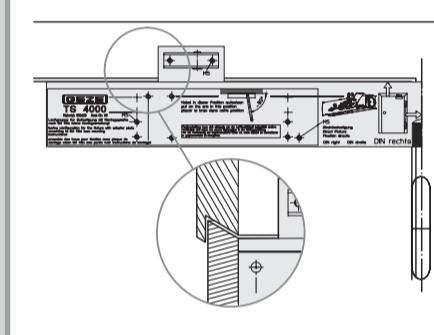
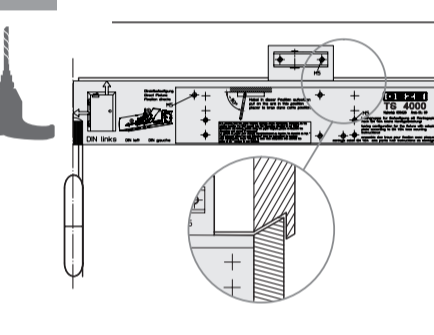
1



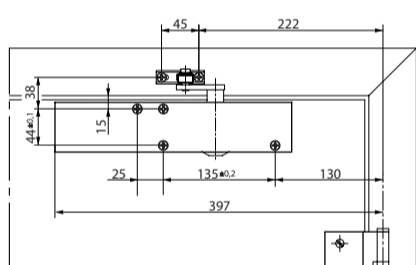
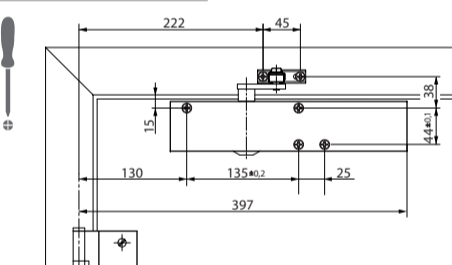
i

CE	GEZE GmbH P.O. Box 1363 71226 Leonberg	12	
0672-CPD-0050	EN 1154	4	8/6/1/1/14
	EN 1154	4	8/7/5/1/14
Substanz: -----	EN 1154	4	8/6/2/1/14
			TS 4000
			TS 4000 EN 5-7
			TS 4000 S

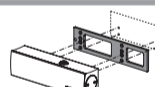
2



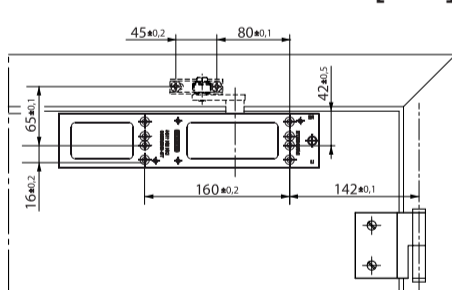
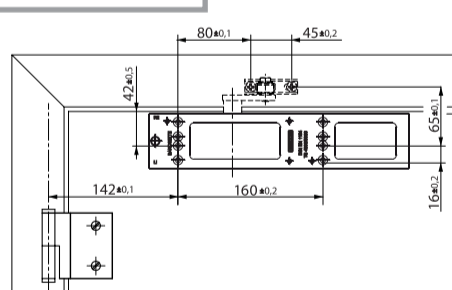
[mm]



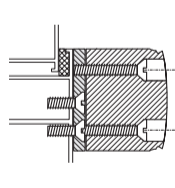
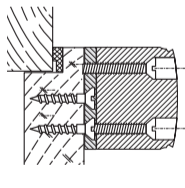
4x
5x60
4x
M5x55



[mm]

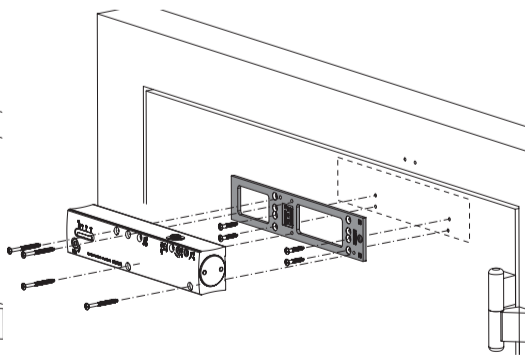
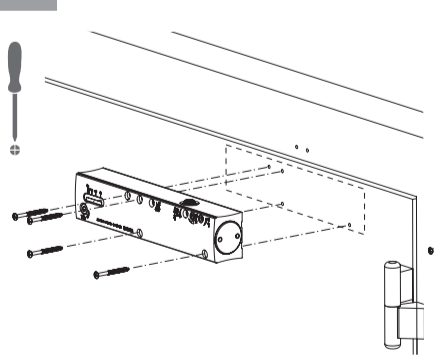


4x
5x35
4x
M5x20

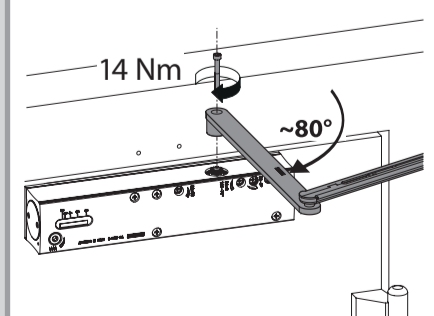
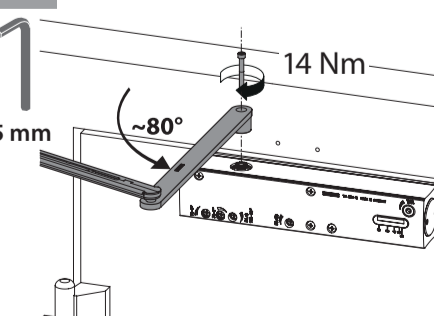


3x
M5x45

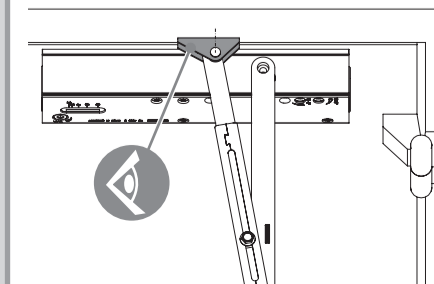
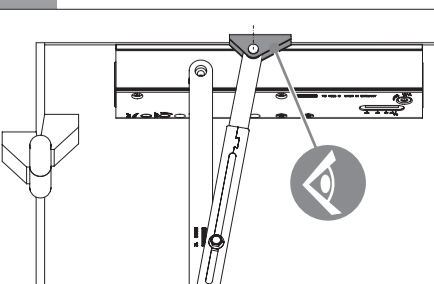
3



4



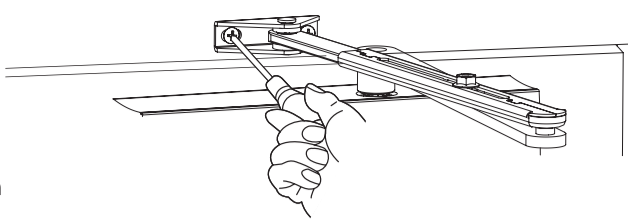
5



6

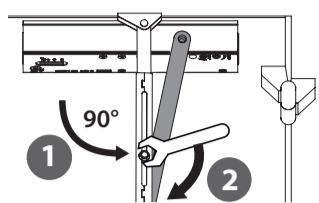
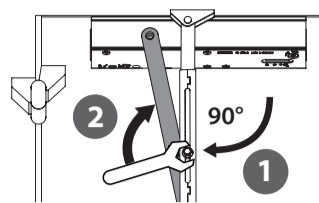
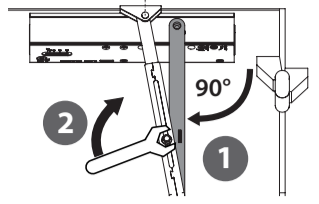
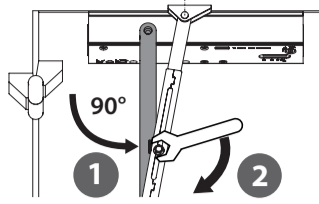
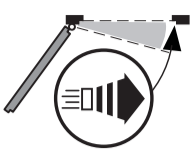


10 mm

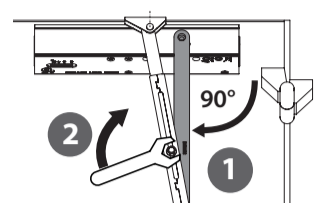
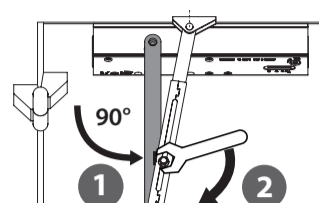


- 2x 5x20
- 2x M5x16

i+ TS 4000



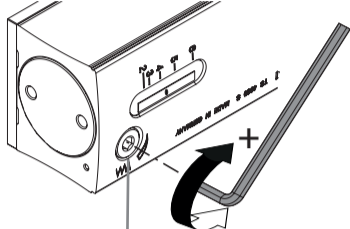
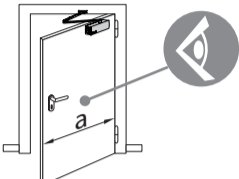
i+ TS 4000 S



7



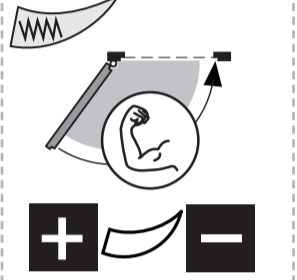
5 mm



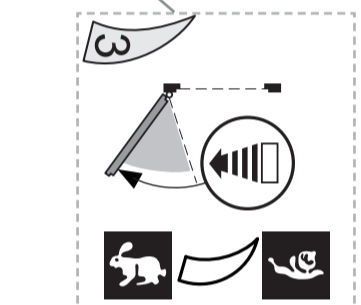
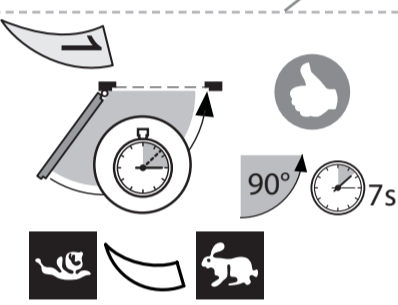
a (mm) - EN

1600	- 7
1400	- 6
1250	- 5
1150	- 4
950	- 3
850	- 2
750	- 1

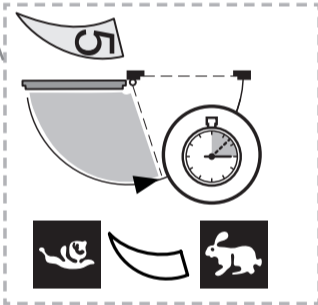
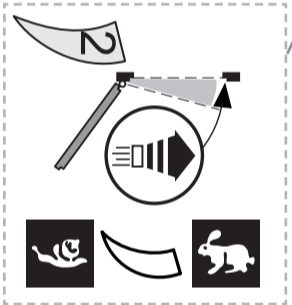
(*) = + ≥ EN 3



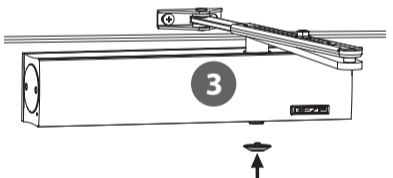
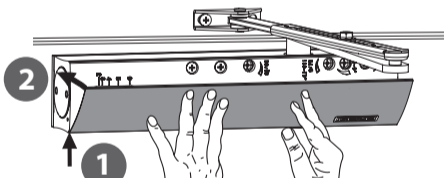
8



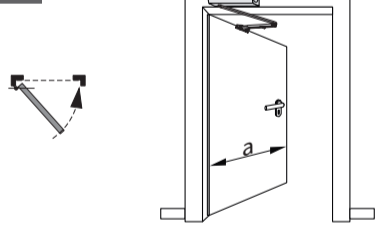
i+ TS 4000 S



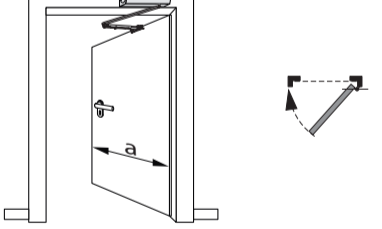
9



i



TS 4000/4000 S a ≤ 1400 mm
TS 4000 EN 5-7 a ≤ 1600 mm



TS 4000/4000 S a ≤ 1400 mm
TS 4000 EN 5-7 a ≤ 1600 mm

